

# SAGOLA

DESIGN

ROBUSTNESS

ADVANTAGES

ERGONOMICS

**NEW  
GENERATION**

COMMITMENT

TECHNOLOGY

SOLUTIONS

INNOVATION

EVOLUTION

WARRANTY

QUALITY

BRAND



# 4100

# XTREME CERAMIC

**2016  
NEW PRODUCT  
PRESSURE  
SPRAY GUN**

*Innovation, functionality  
and performance.*

## NEW 4100 XTREME CERAMIC


**SAGOLA** presents its new spray gun where is the result of a great design work, ergonomics, sturdiness and quality.

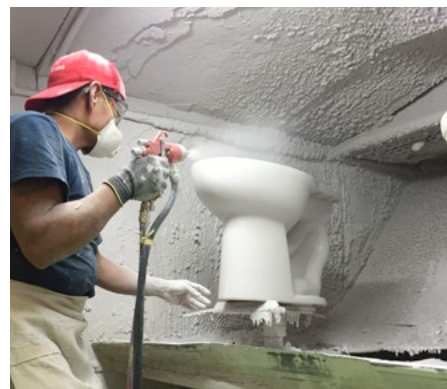
A **perfect fusion** between speed and high transfer with quality finishes of XTREME aerographic systems.

Designed to last over time thanks to its robustness and quality of its components. To this we add its manageability and softness that makes it the ideal pressure spray gun for **difficult jobs**, de **high microns**, **high-speed** application and **complicated and highly abrasive** products.

In the **ceramic** applications, we provide the maximum resistance. And in **vitroc ceramic**, we can achieve the highest degree of refinement and finishing quality.

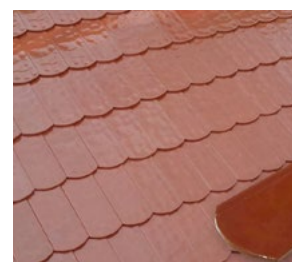
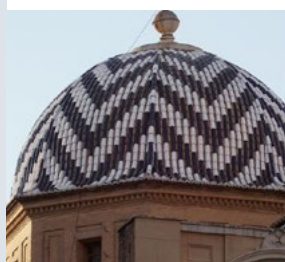
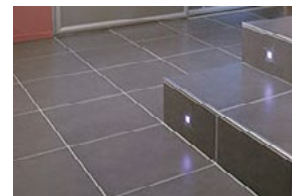
### TECHNICAL DATA

- Weight: 552 g.
- Dimensions: 20 x 19 x 4,2 cm.
- Air inlet connector: BSP 1/4" Male.
- Product inlet connector: BSP 3/8" Male.
- Maximum air pressure: 10 bar.
- Maximum recommended air pressure: 4 bar.
- Materials in contact with product: INOX, POM, Teflón, Nylon and Tungsten carbide.
- ATEX  II 2 GX



### APPLICATIONS

- TOILETTES
- ROOF TILES
- KITCHEN EQUIPMENT
- PLATES
- TILES
- ENGOBE
- CERAMIC ENAMELS
- VITRIFIED ENAMELS
- STRUCTURAL ANTICORROSIVE TREATMENT Zinc Silicates



**Quality finishes** over large surface areas

## FUNCTIONAL ADVANTAGES

- NEW design with EXTREME ergonomic level.
- **Forged and anodized body**, providing great robustness and protection to corrosion both external and internally.
- The external **cleaning** of the gun are minimized by its **polished shine**.
- Easily and smoothly to use.
- **METAL TO METAL** technology, where all sealings are free of joints.
- Air - paint single shaft design.
- Minimum number of spare parts.










# 4100

## XTREME CERAMIC

FUNCTIONAL ADVANTAGES/VERSIONS

## VERSIONS/MANUAL APPLICATION

	SUPERFINE FINISHES	COLOUR FINISHES HIGH PRODUCTION	SMALL PIECE HIGH PRODUCTION	MEDIAN PIECE HIGH PRODUCTION	BIG PIECE HIGH PRODUCTION HIGH MICRONS	GUN CODES 
 <b>1.4 Aircap 78</b>	Fan size <b>350 mm.</b> Air consumption <b>410 L/min</b>					<b>10152130</b>
 <b>1.4 Aircap XT03</b>	Fan size <b>310 mm.</b> Air consumption <b>460 L/min</b>					<b>10152131</b>
 <b>1.8 Aircap 67</b>		Fan size <b>290 mm.</b> Air consumption <b>400 L/min</b>				<b>10152132</b>
 <b>2.2 Aircap 64</b>			Fan size <b>280 mm.</b> Air consumption <b>390 L/min</b>			<b>10152133</b>
 <b>2.5 Aircap 64</b>				Fan size <b>260 mm.</b> Air consumption <b>410 L/min</b>		<b>10152134</b>
 <b>2.8 Aircap 62</b>					Fan size <b>260 mm.</b> Air consumption <b>410 L/min</b>	<b>10152135</b>

4100  
XTREME CERAMIC

SAGOLA 

## TECHNICAL ASPECTS THAT DIFFER OF ALL OTHER

**PACKING-GLAND** self-adjusting of high durability. **STAINLESS STEEL** body quick change version.

**NOZZLE** with closer in **TUNGSTEN CARBIDE** (maximum hardness level) and body in **STAINLESS STEEL**.

**NEEDLE** 100% **TUNGSTEN CARBIDE** (maximum hardness level) eliminating premature wear in packing-gland and trigger zone.

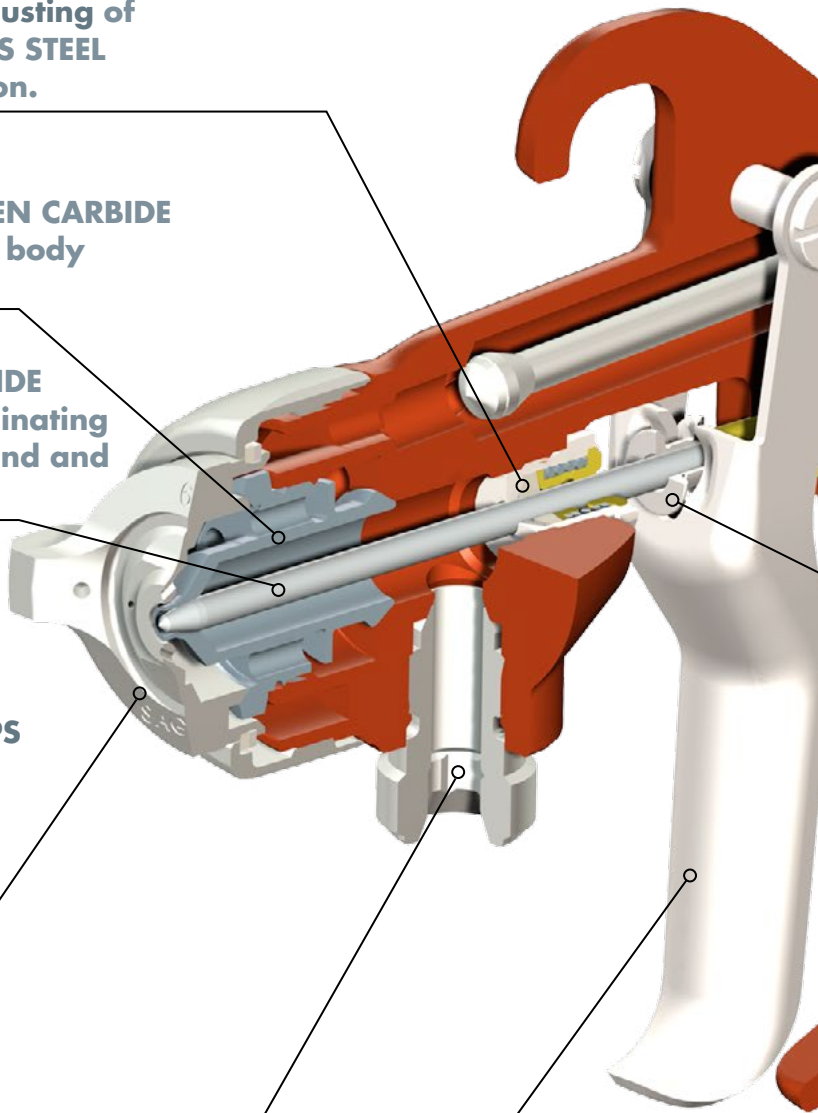
**ANODISED ALUMINIUM AIRCAPS** (corrosion free) of **HIGH STRENGTH** and **DURABILITY**. Ideal for aggressive environments.

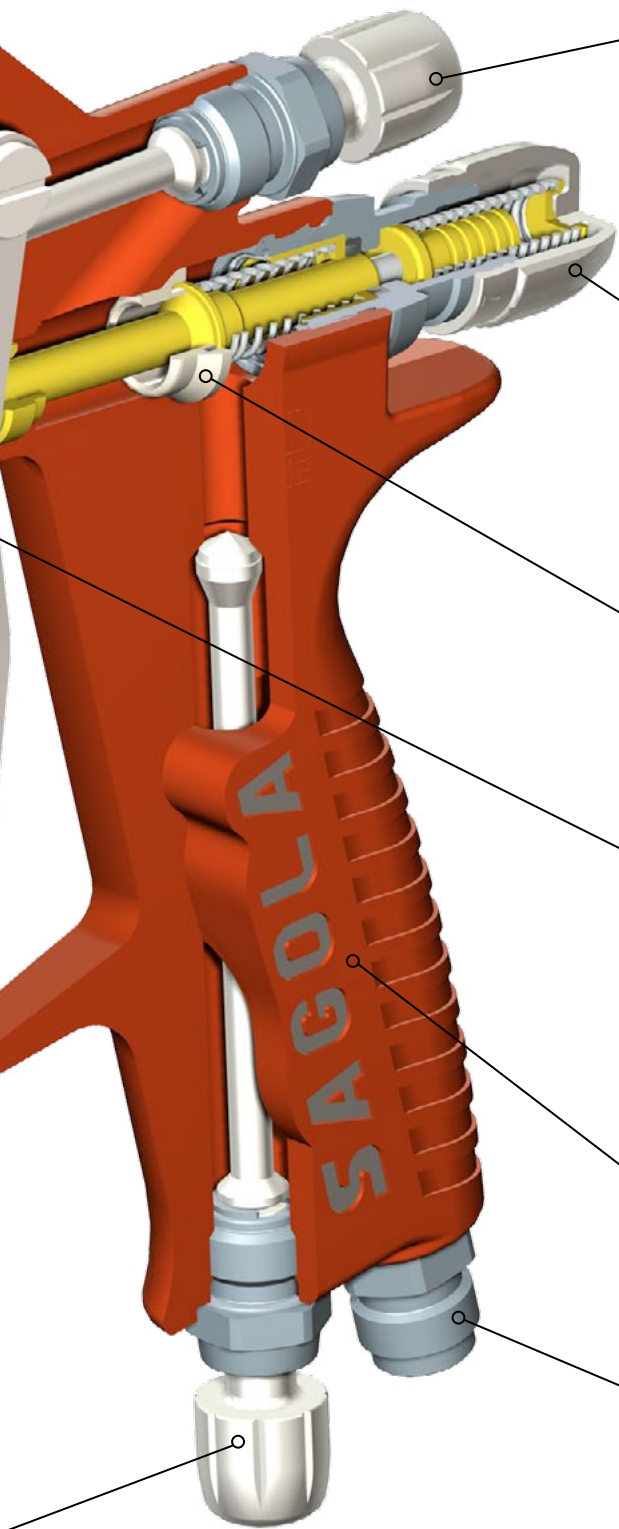
**PRODUCT INLET 3/8"** made in **STAINLESS STEEL**

**TRIGGER** and **AXLE** 100% made in **STAINLESS STEEL** (Ultra-ergonomic design)

**EXTERIOR AND INTERIOR  
CORROSIVE  
PROTECTION  
EN ALL PARTS  
OF GUN**

**AIR INLET REGULATOR**  
Ideal for **QUICK ADJUSTMENT**





high precision **PROGRESSIVE FAN REGULATOR**

**PRODUCT REGULATOR**  
High sensitivity in the adjustment of the amount of material to be sprayed

**HIGH FLOW AIR VALVE "SOFT FLOW"**  
Ideal for work at high pressures

Reinforced **REEL** in **STAINLESS STEEL**.  
Very **HIGH RESISTANCE** against mechanical abrasion

**ERGONOMIC** design body. Reducing operator fatigue

**STAINLESS STEEL AIR INLET 1/4"**

## SAGOLA GUARANTEE

SAGOLA offers a **3-year guarantee** for its entire product range, that covers any design or manufacturing defect in its products. Any defect in its design will be repaired or replaced free of charge to the client.



# SAGOLA SPARE PARTS SERVICE GUARANTEE

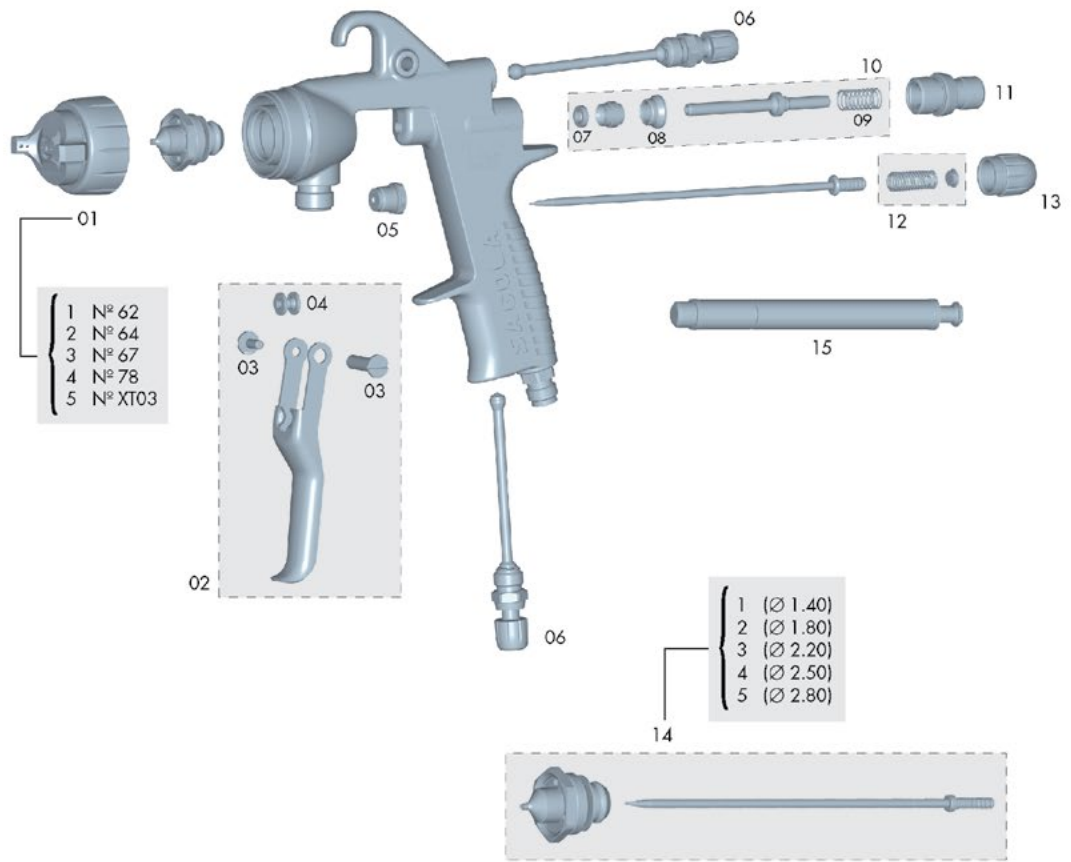
SAGOLA is synonymous with **quality and service**. For this reason SAGOLA offers comprehensive guarantee of the service of components and spare parts for the perfect maintenance of all its products, even those sold over 10 years ago.

**SAGOLA** 

línea **4100** XTREME CERAMIC  
Presión

(\*) Min. 5 u.

ed. 00



Nº	Cod.	U.	Nº	Cod.	U.	Nº	Cod.	U.	Nº	Cod.	U.
01/1	56418567	1	03	56418439	1	09	54710278	1	14/2	10010148	1
01/2	56418570	1	04	51910626	1	10	56418623	1	14/3	10010149	1
01/3	56418568	1	05	56411616	1	11	56411603	1	14/4	10010162	1
01/4	56418590	1	06	56415255	1	12	56410044	1	14/5	10010150	1
01/5	56418566	1	07	56418494	1	13	57810340	1	15	50210214	1
02	56418622	1	08	54110012	1	14/1	10010146	1			

• Este dibujo no es la lista de materiales  
• This drawing is not the bill of materials  
• Ce schéma n'est pas la liste de matériaux

• Diese Zeichnung ist nicht die Stückliste  
• Este desenho não é a lista de materiais  
• Questo disegno non è la distinta base

# ACCESSORIES and COMPLEMENTS

## Pressure Pots

Pressure Pots with maximum strength and precision regulators.

### 6110 NOX

Ref. 10540702

10 L. capacity. Double, high precision, robust regulators with anti-return valve. Made of stainless steel.



### 652 NOX Ref. 10540320

652 NOX Ref. 10540321 with pneumatic rotary agitator

652 NOX Ref. 10540321 with pneumatic alternative agitator

25 L. capacity. Manual agitator, double regulation. Top product outlet. Made of stainless steel.



Rotary



Alternative

### PREMIUM30

Ref. 20530520

30 L. capacity. Two lower product outlets. With double handlebar, foldable for transport. Two handles for holding.



### PREMIUM60

Ref. 20530620

60 L. capacity. Two lower product outlets. With double handlebar, foldable for transport. Two handles for holding.



## Product hoses.

Anti-static aerographic hose for Waterborne/Solvent. 8x16 mm. F/F 3/8"

Reference	Version
56414116	6 m. 8x16mm. F/F 3/8"
56414117	11 m. 8x16mm. F/F 3/8"
56414115	16 m. 8x16mm. F/F 3/8"



## Air + Product hoses. Viscous

Reference	Version
86463891	10 m. Air hose 8 mm. + Product hose 10 mm. Adhesives

## Air hoses. Anti-static

Reference	Version
56414024	6 m. 8x15mm F/F 1/4"
56414025	11 m. 8x15mm F/F 1/4"
56414027	16 m. 8x15mm F/F 1/4"

## Breathing mask

Mask with double charcoal filter against organic and solvent fumes.

Classic  
MP2  
Ref. 14810201



REMEMBER, always use original SAGOLA spare parts in order to guarantee the proper operation of your painting equipment.

# 4100 XTREME CERAMIC

# SAGOLA

SAGOLA S.A. will refuse any responsibility for the damage of defects caused by spray guns with a similar appearance to the originals.

These guns are imitations that **HAVE NOT BEEN MANUFACTURED BY SAGOLA, S.A.**

The SAGOLA S.A. products are exclusively sold through our distributors, with spare parts and a 3-year worldwide guarantee against design and/or manufacturing defects.



## ISO CERTIFICATES



SAGOLA S.A. has always displayed the quality of its products with pride, but lately, in view of its ever more demanding clients, it has obtained certifications that vouch for the guarantee of its know-how and its impeccable organisational quality.



## SAGOLA, S.A.

Urartea, 6 · Apdo. 199 · 01010 Vitoria - Gasteiz (Álava) SPAIN  
Tel.: (+34) 945 214 150 · Fax: (+34) 945 214 147  
e-mail: sagola@sagola.com · web: www.sagola.com